

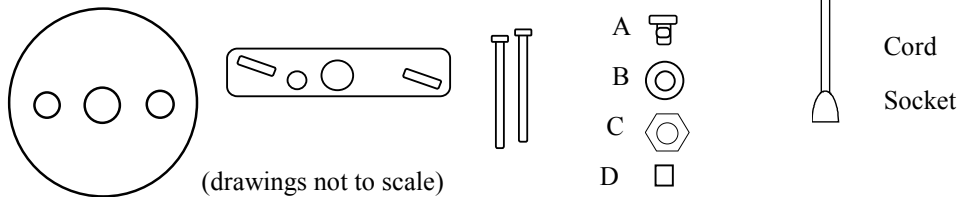
Alluminare Lighting Installation Instructions Standard Pendant

You should have received in this kit:

- A. 1 Canopy B. 1 Crossbar C. 2 screws D. 1 Cordgrip Kit E. 1 Cordset

You will also need to have:

- 1 Philips head screwdriver
1 flat head screw driver
1 wirestripper
2 wire nuts



How to Install

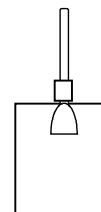
WARNING: Before wiring to the power supply, turn off the electricity at the fuse or circuit breaker box. Ensure grounding to avoid potential shock and to ensure reliable performance.

1. If you are replacing an old fixture, first uninstall it from the junction box in the ceiling. If you do not have a junction box, consult a qualified professional electrician to have one installed.

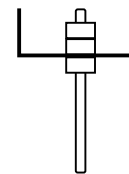
2. Check the house wires, which extend from the junction box, for loose or damaged wiring. If they are loose or damaged, they **MUST** be repaired before installing your Alluminare fixture. **DO NOT PROCEED UNTIL DAMAGED WIRING HAS BEEN REPAIRED OR REPLACED.**

3. Slide Cord through ring in top of lampshade so that threaded rod sticking out from Socket goes through the ring. Slide Cord through Cordgrip Part D, and attach Cordgrip Part D to threaded rod so that lampshade is secure.

Step 3



Step 4



4. Slide Cordgrip Part A over Cord so that larger end is facing away from Cordset Socket. Insert Cordgrip Part A in center hole of Canopy. Pull the Cord through Cordgrip Part A until Cord is desired length. Screw Cordgrip Parts B and C onto Part A to secure Cord.

5. Tie a knot in the Cord so that it rests just inside the Canopy. Slide center hole of Crossbar over remaining Cord, then trim Cord to get rid of excess. Leave about 2 inches of Cord remaining.

6. Within the Cord are a black wire and a white wire. Use wire stripper to expose 1/2 inch of each. Use wire stripper again to expose about 1/4 inch of the copper filaments within wires.



Step 6

7. Twist the exposed copper filaments from the black fixture wire around those of the black house wire and secure with a wire nut. Do the same with the white wires.

8. Wrap the exposed copper filaments of the green house wire around the "GND" screw on the Crossbar and tighten the screw with flat head screwdriver.

9. Insert the Screws up through the two smaller holes on the Canopy, through the matching holes in the Crossbar, and use Philips head screwdriver to screw into appropriate holes in junction box. Make sure that all loose wiring is completely inside the Canopy.

10. If your Alluminare fixture came with a diffuser, attach the diffuser using the Diffuser Installation Instructions.

Congratulations! Your Alluminare fixture is now installed and ready to use!